



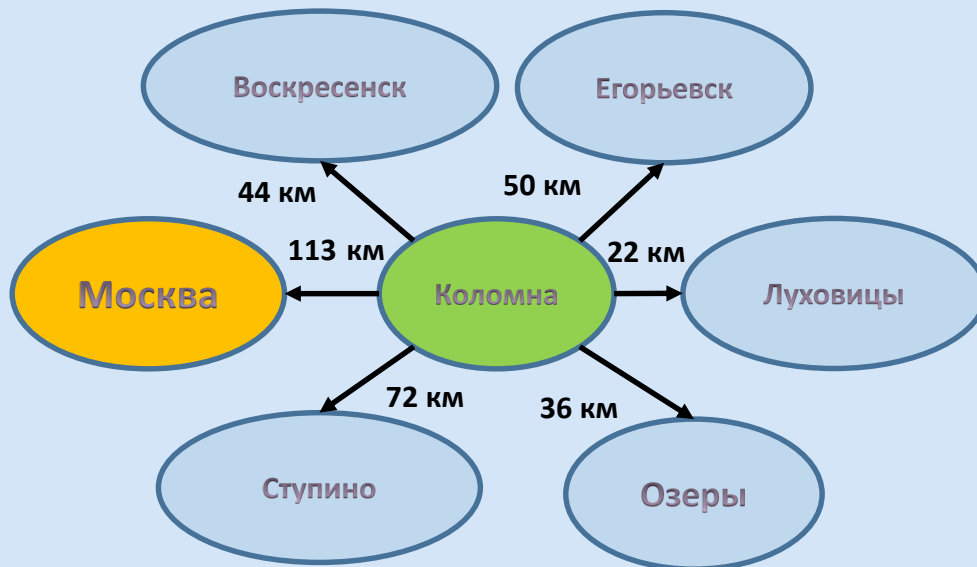
Investment passport of Kolomna city district



Geography



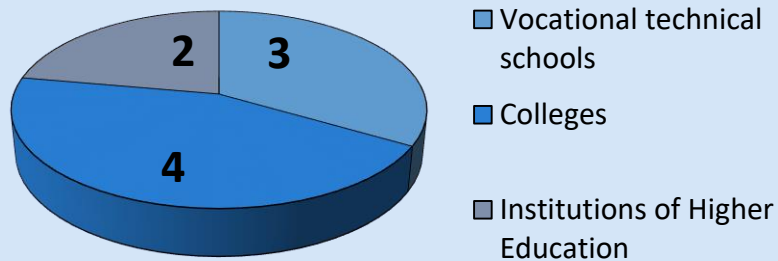
- Kolomna city district is located 113 km South-East of Moscow, on the "Moscow-Ryazan" railway line, at the confluence of Oka and Moskva rivers. The Federal Highway M5 "Ural" bypasses Kolomna from the North-East; the Regional Highway "Stupino-Kolomna-Yegoryevsk" bypasses the city from the West.
- Kolomna borders with Voskresensky, Yegoryevsky, Lukhovitsky, Ozersky and Stupinsky districts.
- The area of the territory is 117.9 thousand hectares.



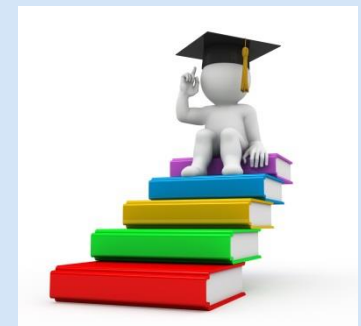
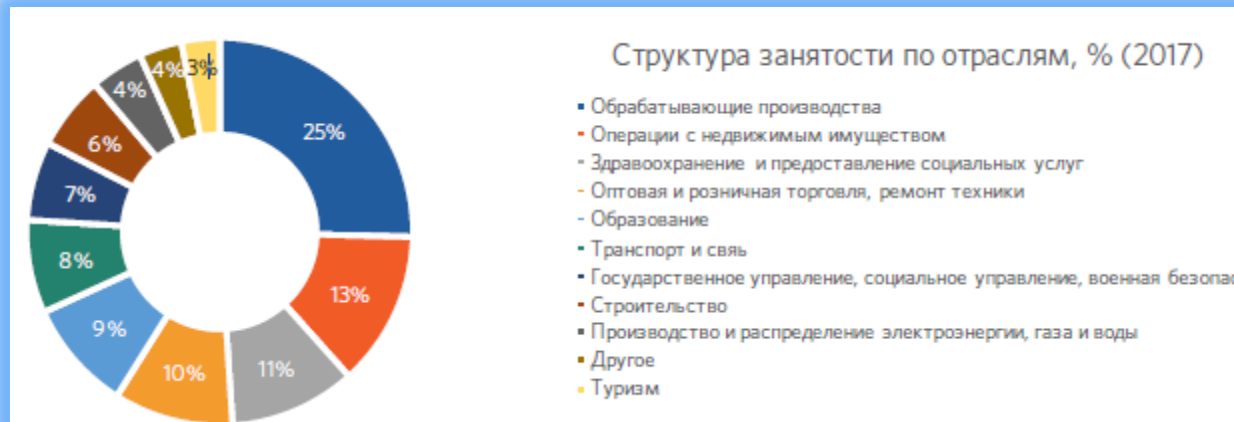
Demographics, education, human resources

- The population as of January 1, 2019 is 184 706 people, including the working population of 102,095 people.
- Average monthly salary:
 - for large and medium-sized organizations - 48.7 thousand rubles
 - for the full range of organizations - 43.8 thousand rubles

Professional education:



The main directions of students' training offered:



Resources

Climate.

Kolomensky district has a temperate continental climate with significant rainfall throughout the year, including the driest month – April. The average annual temperature is 4.9° C, the average annual rainfall is 606 mm. The duration of the frost-free period is about 140 days.



Minerals:

- sand
- clay
- limestone



Average specific indicator of cadastral value per square meter of land:

- for housing and communal services – 938,58 rub./ m³
- country associations – 434,01 rub./ m³
- horticultural associations – 568,13 rub./ m³
- objects of trade – 2099,37 rub./ m³
- industrial facilities – 354,51 rub./ m³



Transport



Kolomna city district has a developed transport infrastructure..

The Federal highway M5 "Ural" passes through the city, from North to South-East the railway line in the direction of Moscow-Ryazan passes through the city. The city is located at the confluence of Oka and Moskva rivers.



There are two railway stations of the Moscow-Ryazan line in the city of Kolomna – they are called Kolomna and Golutvin railway stations. In addition, Kolomna-Ozery line departs from the main one. The line is mostly used for labor migration as well as for a seasonal use.



Navigation is carried out on Oka and Moskva rivers. Mostly cargo ships ply, providing construction materials and river sand around Kolomna and the South of Moscow.

There are also excursion passenger river boats, carried out by commercial carriers, mainly without a specific schedule, under the order.

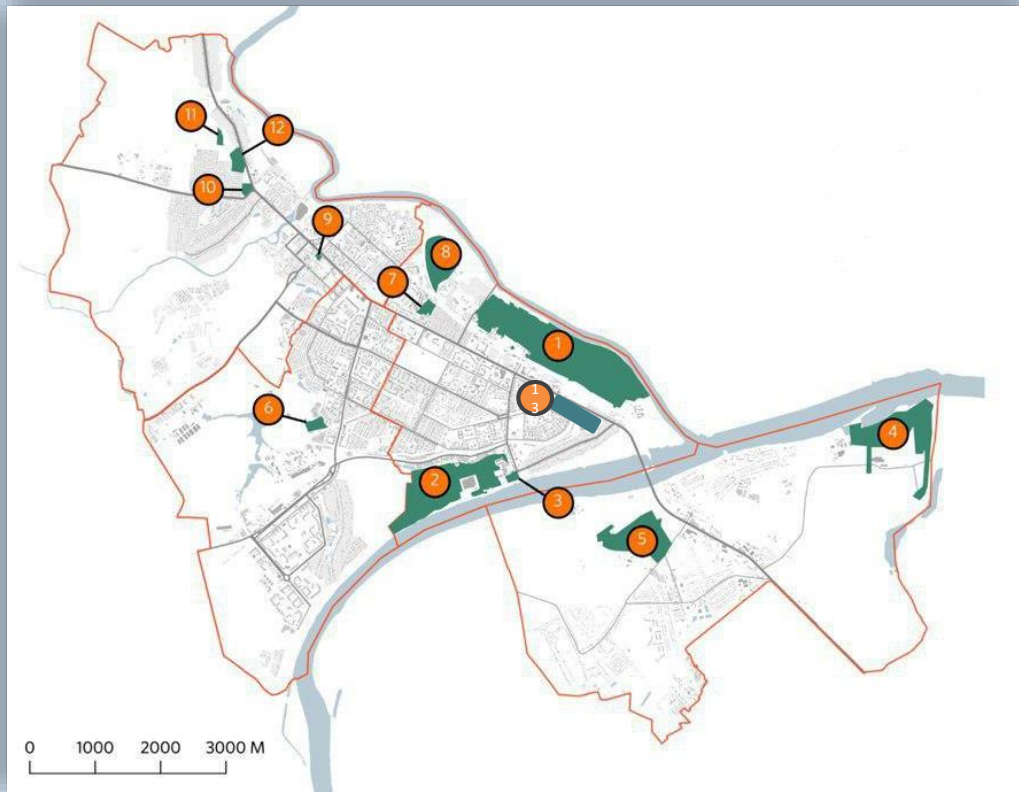


Public transport is provided by buses and trams. Kolomna has the only tram park preserved in the Moscow region.

The bus network is well developed. Most part of the city district is provided with bus stops within walking distance of 300 m. There is a bus station called “Staraya Kolomna” (Kolomna Old Town) on the territory of the city, in its historical part. There is also an intercity bus station which is located in Vosstaniya Square, in close proximity to the largest transport node - the station Golutvin.



Large enterprise



1. JSC "Kolomna Plant"
2. JSC "Stankotekh" (ex. Kolomna plant of heavy machines)
3. JSC "NPK "KBM"
4. JSC "Port Kolomna"
5. JSC "Holsim (Rus) SM"
6. MUP "The heat of Kolomna"
7. JSC "Kolomnakhlebprom"
8. JSC "Kanat"
9. Kolomna printing house
10. JSC "Kolomna plant RTI"
11. JSC "ATEK Energo"
12. GUP MO "Mostransavto"
13. JSC "VNIKT"



Besides, on the territory of Kolomna city district are located:

JSC "SOMEKS" (group of companies)

LLC "Broen"

LLC "ADL Group"

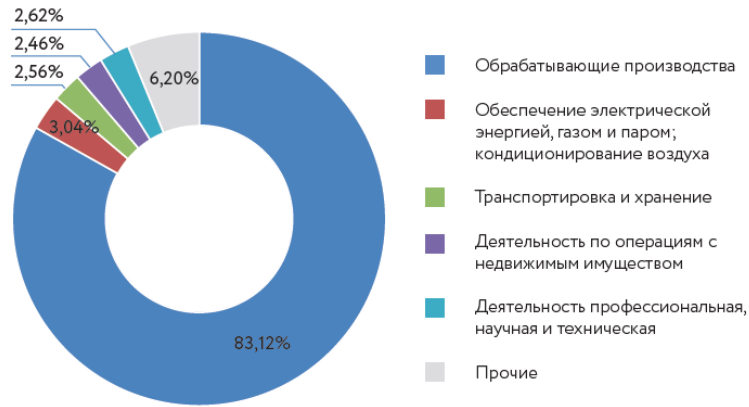
FGUP APK "Nepicino"

LLC "Akatyevskoe"



Priority branches of development

Отгруженная продукция по отраслям



• Metal-based manufacturing industry



• Building materials



• Tourism



• Diesel engine manufacturing



• Diesel locomotive manufacturing



• Light industry



• Agriculture



• Food industry



Investment projects

Loft space "Gramophone"/ «Patephonka»

It is planned to arrange creative platforms, shops, a restaurant, art-coworking space, a hostel and a hotel. Partially the development of the loft has already been started: in the factory territory there are several photostudios, a fitness-loft, a blacksmith workshop, a workshop of the cardboard decorations production.

The territory of the loft – 20 000 m²

The investment amount - 250 million rubles

Fair space «Horse square»

The project presupposes the reconstruction of the historically existing Horse square, located opposite the main building of the loft space "Gramophone"/ «Patephonka».

It is expected to install a fair square, a museum of artillery military equipment, a playground, an arrangement of concession stands for the purpose of trading in farm products produced in the Kolomensky district, various souvenirs, and handmade items.

The investment amount/ investment volume -15 million rubles



Transport Interchange Node (TIN) Kolomna

The project provides the creation of pedestrian and bicycle paths, the creation of green areas and small architectural forms, as well as the running a free Wi-Fi network and the creation of areas for non-stationary shopping facilities.

The parking space– 300 points.

The investment amount - 260 million rubles



Investment projects

Modernization and expansion of existing manufacture

PLC «Kolomna Plant»

The project implementation period - 2017-2022

The investment amount for the project - 15.5 billion rubles



Co., Ltd. «Kolomna Polyurethanes Production»

The project implementation period - 2016-2020

The investment amount for the project - 1 billion rubles.



Co., Ltd. «Trade House ADL»

The project implementation period - 2018-2020

The investment amount for the project - 1 billion rubles



Компания АДЛ

Разработка, производство, поставки
инженерного оборудования



Co., Ltd. «Henkel Bautechnik»

The project implementation period - 2019-2020

The investment amount for the project – 350 million rubles



Investment projects

The construction of new factories



The construction of the sausages and deli meat plant Co., Ltd. “Agrofood”

Project implementation period - 2016-2020

The investment amount for the project– 1.35 billion rubles



Construction of a glass-cullet recycling plant Co., Ltd. “Magistral Invest”

Project implementation period - 2018-2019

The investment amount for the project– 250 million rubles



Construction of a plant for the production of sandwich panels Co., Ltd. “Capital Stroy Company”

Project implementation period - 2019-2020

The investment amount/ investment volume for the project– 75 million rubles



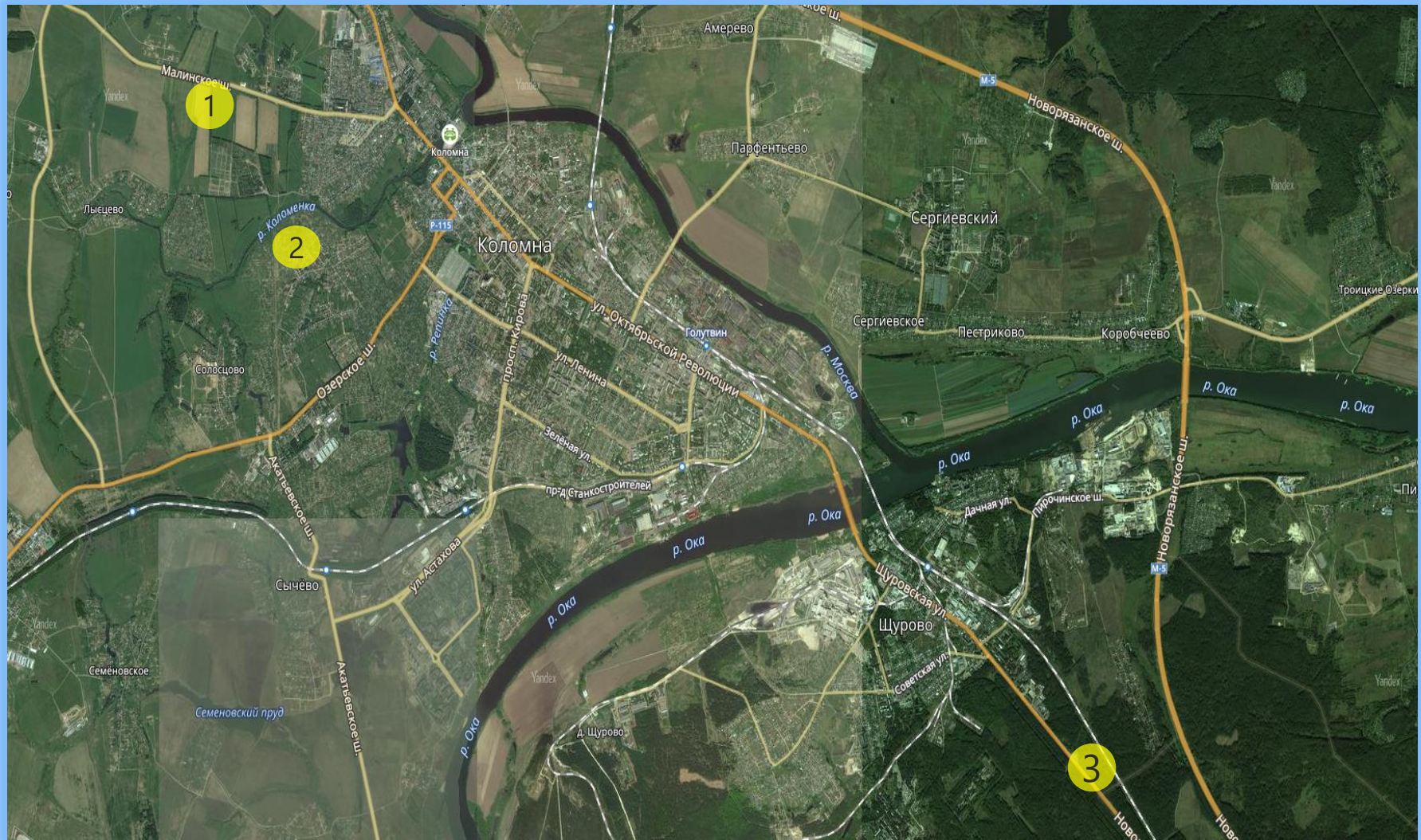
Goat-farming project of farm household “Mira Cheese/Mira Sir”

Project implementation period - 2019-2020

The investment amount/ investment volume for the project– 450 million rubles

Perspective/future investment subjects

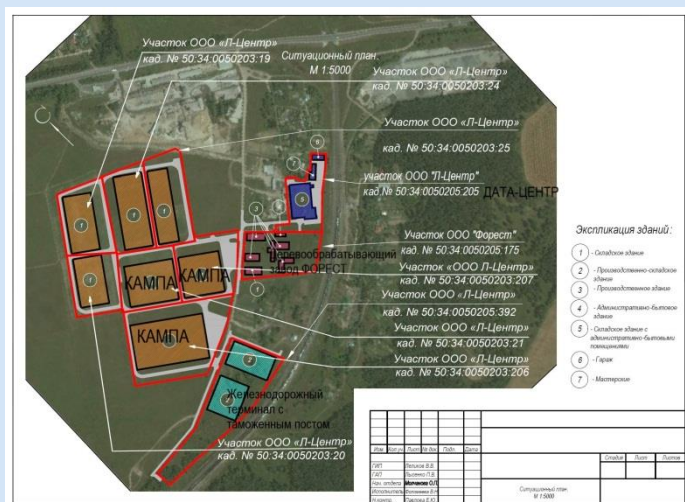
The municipal property



The municipal property

No	The cadastral number to a plot of land, the reference link to the disposition	Land plot area, hectare	The permitted use	Location	Cadastral value, rub.
1	50:57:0010205:1	10	For the construction of the plant of the new-generation diesel engines (permitted use will be conducted according to the classifier on request)	Kolomna town, Malinsky highway	27 119 000
2	50:57:0030201:184	5,7	The hotel service	Kolomna town. St. Podlipki-4, No. 152-a	67 532 666,41
3	50:57:0100902:5	3,44	For the construction of the technopark (permitted use will be conducted according to the classifier on request)	Kolomna town, St. October/Oktyabrski. 50 m eastward from the reference-point. The reference-point is a one-story building designed for the gasoline filling station/ gas station No. 312.	9 455 121

Industrial park "Center"



Location	Settlement of the Nepetsino Station
Type of the right	Private property
The total area of plots	33.5 hectares (23.7 hectares are free)
Transport accessibility	Federal Highway M5, 65 km from Moscow Ring Road, 12 km to the center of Kolomna, availability of connection to railway tracks
The point of connection to utilities	Power supply, gas distribution, cold water supply, sewerage system available
Residents	LLC "Forest" LLC "Promengineering"

№	Cadastral number to a plot of land, a reference to the location	Land plot area, hectares	Permitted use	The availability of the engineering infrastructure	Cost: sale/ lease
1	50:34:0050205:392	4,9	For the placement of a production site for primary processing of tim	Power supply, gas supply, water supply, wastewater disposal	From 10 to 14 million rubles. / from 1.5 to 2 million rubles. per year
2	50:34:0050205:205	2	For the industrial building	Power supply, gas supply, water supply, wastewater disposal	
3	50:34:0050203:20	2,86	For the placement of the complex of buildings of production and warehouse appointment	Power supply, gas supply, water supply, wastewater disposal	

No	Cadastral number to a plot of land, a reference to the location	Land plot area, hectares	Permitted use	The availability of the engineering infrastructure	Cost: sale/ lease
4	50:34:0050203:206	5,7	For the placement of the complex of buildings of production and warehouse appointment	Power supply, gas supply, water supply, wastewater disposal	From 10 to 14 million rubles. / from 1.5 to 2 million rubles. per year
5	50:34:0050203:21	2,86	For the placement of the complex of buildings of production and warehouse appointment	Power supply, gas supply, water supply, wastewater disposal	
6	50:34:0050203:207	2,86	For the placement of the complex of buildings of production and warehouse appointment	Power supply, gas supply, water supply, wastewater disposal	
7	50:34:0050203:25	2,86	For the placement of the complex of buildings of production and warehouse appointment	Power supply, gas supply, water supply, wastewater disposal	
8	50:34:0050203:24	2,86	For the placement of the complex of buildings of production and warehouse appointment	Power supply, gas supply, water supply, wastewater disposal	
9	50:34:0050203:19	2,86	For the placement of the complex of buildings of production and warehouse appointment	Power supply, gas supply, water supply, wastewater disposal	

Industrial park "Parfentyevo"



Location	Village Parfentyevo
Type of the right	Private property
The total area of plots	120 hectares (61,7 hectares are free)
Free area	Industrial production, logistics, hotels
Transport accessibility	Highway M, 90 km from Moscow Ring Road, 7 km to the center of Kolomna
The point of connection to utilities	Power supply 600 kW, gas supply 241 m ³ /day, cold water supply
Residents	CJSC "Tander" LLC "Selta" LLC " Agrofood"

No	Cadastral number to a plot of land, a reference to the location	Land plot area, hectares	Permitted use	The availability of the engineering infrastructure
1	50:34:0010617:202	0,93	For the placement of low-rise house building, cultural and household and recreational facilities	Power supply, gas supply, water supply, wastewater disposal, storm water drain
2	50:34:0010617:200	0,8	For the placement of low-rise house building, cultural and household and recreational facilities	Power supply, gas supply, water supply, wastewater disposal, storm water drain

No	Cadastral number to a plot of land, a reference to the location	Land plot area, hectares	Permitted use	The availability of the engineering infrastructure
3	50:34:0010617:199	1,75	For the placement of low-rise house building, cultural and household and recreational facilities	Power supply, gas supply, water supply, wastewater disposal, storm water drain
4	50:34:0010617:193	0,98	Warehouses	Power supply, gas supply, water supply, wastewater disposal, storm water drain
5	50:34:0010617:192	0,99	Warehouses	Power supply, gas supply, water supply, wastewater disposal, storm water drain
6	50:34:0010617:190	0,97	Light industry	Power supply, gas supply, water supply, wastewater disposal, storm water drain
7	50:34:0010617:189	0,81	Warehouses	Power supply, gas supply, water supply, wastewater disposal, storm water drain
8	50:34:0010617:188	0,68	Light industry	Power supply, gas supply, water supply, wastewater disposal, storm water drain
9	50:34:0010617:197	0,64	Warehouses	Power supply, gas supply, water supply, wastewater disposal, storm water drain
10	50:34:0010617:196	0,72	Warehouses	Power supply, gas supply, water supply, wastewater disposal, storm water drain
11	50:34:0010617:195	0,63	Food industry	Power supply, gas supply, water supply, wastewater disposal, storm water drain
12	50:34:0010617:252	0,82	Land plots (territories) of common usage	Power supply, gas supply, water supply, wastewater disposal, storm water drain
13	50:34:0010617:162	0,83	Transport service	Power supply, gas supply, water supply, wastewater disposal, storm water drain
14	50:34:0010617:203	0,34	For the placement of low-rise house building, cultural and household and recreational facilities	Power supply, gas supply, water supply, wastewater disposal, storm water drain
15	50:34:0010617:154	4,77	For the placement of low-rise house building, cultural and household and recreational facilities	Power supply, gas supply, water supply, wastewater disposal, storm water drain

No	Cadastral number to a plot of land, a reference to the location	Land plot area, hectares	Permitted use	The availability of the engineering infrastructure
16	50:34:0010617:191	0,99	Light industry	Power supply, gas supply, water supply, wastewater disposal, storm water drain
17	50:34:0010617:194	0,67	Food industry	Power supply, gas supply, water supply, wastewater disposal, storm water drain
18	50:34:0010617:175	0,86	Warehouses	Power supply, gas supply, water supply, wastewater disposal, storm water drain
19	50:34:0010617:174	0,87	Warehouses	Power supply, gas supply, water supply, wastewater disposal, storm water drain
20	50:34:0010617:173	0,87	Warehouses	Power supply, gas supply, water supply, wastewater disposal, storm water drain
21	50:34:0010617:172	0,87	Light industry	Power supply, gas supply, water supply, wastewater disposal, storm water drain
22	50:34:0010617:171	0,87	Light industry	Power supply, gas supply, water supply, wastewater disposal, storm water drain
23	50:34:0010617:170	0,87	Light industry	Power supply, gas supply, water supply, wastewater disposal, storm water drain
24	50:34:0010617:214	0,93	Transport service	Power supply, gas supply, water supply, wastewater disposal, storm water drain
25	50:34:0010617:213	0,99	Transport service	Power supply, gas supply, water supply, wastewater disposal, storm water drain
26	50:34:0010617:210	1,1	For the placement of low-rise house building, cultural and household and recreational facilities	Power supply, gas supply, water supply, wastewater disposal, storm water drain
27	50:34:0010617:136	0,22	For the placement of low-rise house building, cultural and household and recreational facilities	Power supply, gas supply, water supply, wastewater disposal, storm water drain
28	50:34:0010617:205	1,3	For the placement of low-rise house building, cultural and household and recreational facilities	Power supply, gas supply, water supply, wastewater disposal, storm water drain

№	Cadastral number to a plot of land, a reference to the location	Land plot area, hectares	Permitted use	The availability of the engineering infrastructure
29	50:34:0010617:134	1,6	For the placement of low-rise house building, cultural and household and recreational facilities	Power supply, gas supply, water supply, wastewater disposal, storm water drain
30	50:34:0010617:140	4	For the placement of low-rise house building, cultural and household and recreational facilities	Power supply, gas supply, water supply, wastewater disposal, storm water drain
31	50:34:0010617:167	3,2	Land plots (territories) of common usage	Power supply, gas supply, water supply, wastewater disposal, storm water drain
32	50:34:0010617:166	0,83	Transport service	Power supply, gas supply, water supply, wastewater disposal, storm water drain
33	50:34:0010617:165	0,53	Transport service	Power supply, gas supply, water supply, wastewater disposal, storm water drain
34	50:34:0010617:164	0,8	Transport service	Power supply, gas supply, water supply, wastewater disposal, storm water drain
35	50:34:0010617:163	0,85	Transport service	Power supply, gas supply, water supply, wastewater disposal, storm water drain
36	50:34:0010617:161	0,83	Transport service	Power supply, gas supply, water supply, wastewater disposal, storm water drain
37	50:34:0010617:160	0,84	Transport service	Power supply, gas supply, water supply, wastewater disposal, storm water drain
38	50:34:0000000:20159	1,8	For the placement of low-rise house building, cultural and household and recreational facilities	Power supply, gas supply, water supply, wastewater disposal, storm water drain
39	50:34:0000000:20157	0,84	Transport service	Power supply, gas supply, water supply, wastewater disposal, storm water drain
40	50:34:0000000:20156	0,53	Transport service	Power supply, gas supply, water supply, wastewater disposal, storm water drain
41	50:34:0000000:20155	0,76	Transport service	Power supply, gas supply, water supply, wastewater disposal, storm water drain

Private property (Greenfield)

№	Cadastral number to a plot of land, a reference to the location	Land plot area, hectares	Permitted use	The availability of the engineering infrastructure	Cost: sale/ lease
1	50:34:0010617:206	1	Food industry	On the border of the plot of land	Being discussed at the negotiations
2	50:34:0010617:207	1	Food industry	On the border of the plot of land	
3	50:34:0010617:208	1	Food industry	On the border of the plot of land	
4	50:34:0010617:209	1	Hotel service	On the border of the plot of land	
5	50:34:0010617:210	1,1	For the placement of low-rise house building	On the border of the plot of land	
6	50:34:0010617:211	1	Food industry	On the border of the plot of land	
7	50:34:0010617:212	2,9	For the placement of low-rise house building	On the border of the plot of land	
8	50:34:0010617:215	1	Food industry	On the border of the plot of land	
9	50:34:0010510:79	10	For the placement of administrative and commercial buildings, industrial, municipal and warehouse facilities, engineering and transport infrastructure, recreational purposes	On the border of the plot of land	
10	50:34:0010510:722	18,7	For the placement of administrative and commercial buildings, industrial, municipal and warehouse facilities, engineering and transport infrastructure, recreational purposes	There is an ability of supply	
11	50:34:0010510:48	77,2	For agricultural industry	No more than 1km from the boundaries of the plot of land	
12	50:34:0010510:52	31,6	For agricultural industry	No more than 1km from the boundaries of the plot of land	
13	50:34:0050444:6	38	For agricultural industry	On the border of the plot of land	
14	50:34:0050306:143	15,6	For the placement of administrative, commercial, production and warehouse complex	of gas -1 km; of electric power- 0.6 km; of water- well; Sewerage system	

Private property (Brownfield)

No	Cadastral number to a plot of land, a reference to the location	Land plot area, hectares	Permitted use	The availability of the engineering infrastructure	Cost: sale/ lease
1	50:34:0030102:1	6,6	For the needs of defense, security, space support	Electric power supply – 400 kW; Gas supply – 4 km; Heat supply - 2,15 km; Water supply – 2 km; Sewerage system – 2 km	Being discussed at the negotiations
2	50:34:0050219:32	2,38	For the placement of administrative and warehouse building	Electricity- 400 kW; The ability of supply of gas, water and sewerage	
3	50:34:0050219:34	2	For the placement of industrial and warehouse complex	The ability of supply of electricity, gas, water and sewerage	
4	50:34:0050219:33	0,57	For the placement of industrial and warehouse complex	The ability of supply of electricity, gas, water and sewerage	

Investment attractiveness

The area of investment territories is:

7549,87 hectares- industrial building;
37,5 hectares- building of hotels;
368,2 hectares- house building;
47,6 hectares- recreational territories;
813,92 hectares- agricultural land;
153,864 hectares- lands of the settlements



Factors that have an effect on the investment climate of urban district:

- ☐ advantageous geographical position
- ☐ relatively favorable environmental situation
- ☐ a large number of resource opportunities for the development of tourism
- ☐ accessibility of transport
- ☐ educational base, labor resources
- ☐ the consumer potential



Methods to support business activities

Methods to support the industrial enterprises of Moscow region

<https://kolomnagrad.ru/deyatelnost/promyshlennost/prominform/4112-mery-podderzhki.html>

Financial support:

- ✓ Municipal program of support of small and medium enterprises is established in Kolomna city district
- ✓ Subsidizing the costs of entrepreneurs at the regional level
- ✓ Tax benefits

Property support:

- ✓ List of municipal property for leasing to SMEs is established
- ✓ (<http://kolomnagrad.ru/deyatelnost/business/busdocs/3378-utochnenny-perechen-municipalnogo-imuschestva-dlya-predostavleniya-subektam-malogo-i-srednego-predprinimatelstva.html>)
- ✓ Rent discounts (50%) for socially oriented business

Information and educational support:

- ✓ Business meetings, consultations, seminars, meetings with entrepreneurs

Programs of JSC "SME Corporation» :

The ABC of entrepreneur (for starting entrepreneurs)

School of entrepreneurship (for active entrepreneurs)

"Mother-entrepreneur" (for women who are on childcare leave)



<http://mbmosreg.ru>



Московский областной фонд
микрофинансирования
субъектов МСП

<http://www.mofmicro.ru>



<http://www.mosreg-garant.ru>



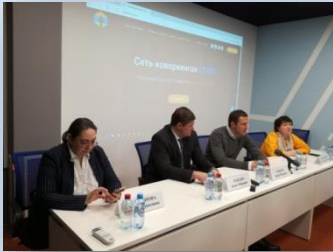
Фонд поддержки ВЭД
Московской области
exporthelp@mosreg.ru
8-926-971-62-64



фрп Фонд Развития
Промышленности
<http://frprf.ru>

The organization of infrastructure to support subjects of the entrepreneurship

Coworking center "Start"



8 (499) 110-90-55

info@coworking-start.ru

Address: Kolomna, Central district, Frunze street, 46

<https://coworking-start.ru/locations/kolomna>

Union "Chamber of commerce and industry"



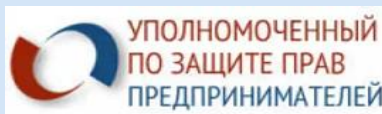
8 (496) 610-13-10, 8 (926) 220-45-11

ktp@list.ru

Address: 140400, Russian Federation, Moscow region, Kolomna, Umanskaya street, 20 (MSO, 2nd floor)

<https://kolomna.tpprf.ru>

Commissioner for the protection of the rights of entrepreneurs



Maxim Shilov

8 926 220-45-11

Commission on economic development, entrepreneurship and investments of the Public chamber



8 (496) 613-89-49

opkolomna@gmail.com

<http://opmo.mosreg.ru/chambers/kolomna-400/>



Service center "My business"

8 (499) 645-64-15

DmitrievVD@mosreg.ru

Address of the office: 140400, Moscow region, Kolomna, Umanskaya street, 20)

Informational resources



Television channels

Kolomna TV

Kolomna, Gagarin street, 70
8 (496) 619-27-07
e-mail: ktv@colomna.ru



Newspapers

Kolomenskaya Pravda

Kolomna, October revolution street, 206
8 (496) 618-58-61
e-mail: kolpravda@mail.ru



Kolomensky vestnic YAT

Kolomna, Makeyev street, 1A
8 (496) 612-40-09
e-mail: info@gazetayat.ru



Question Answer

Kolomna, October revolution street, 301
8 (496) 613-40-75
e-mail: vo-gazeta@mail.ru



Angle of view

Kolomna, Gagarin street, 70
8 (496) 619-27-03
e-mail: uz@colomna.ru

Broadcasting stations



Radio of Kolomna

Kolomna, K. Shilov street, 9
8 (496) 612-44-19
e-mail: kolomnaradio@mail.ru

The Internet

Administration website: <http://www.kolomnagrad.ru/>

Information portal: <http://kolomna-spravka.ru/>

Useful information for investors



Administration of Kolomna city district
140407, Moscow region, Kolomna, Sovetskaya
square, house 1
phone: 8(496) 612-21-11
fax: 8(496) 612-44-38
e-mail: kolomna@mosreg.ru

Name	Position	Contacts
Denis Lebedev	is the Head of Kolomna city district	8 (496) 612-21-11 kolomna@mosreg.ru
Artem Danilov	is the deputy head of administration of Kolomna city district	8 (496) 612-20-62 DanilovAS@adm.colomna.ru